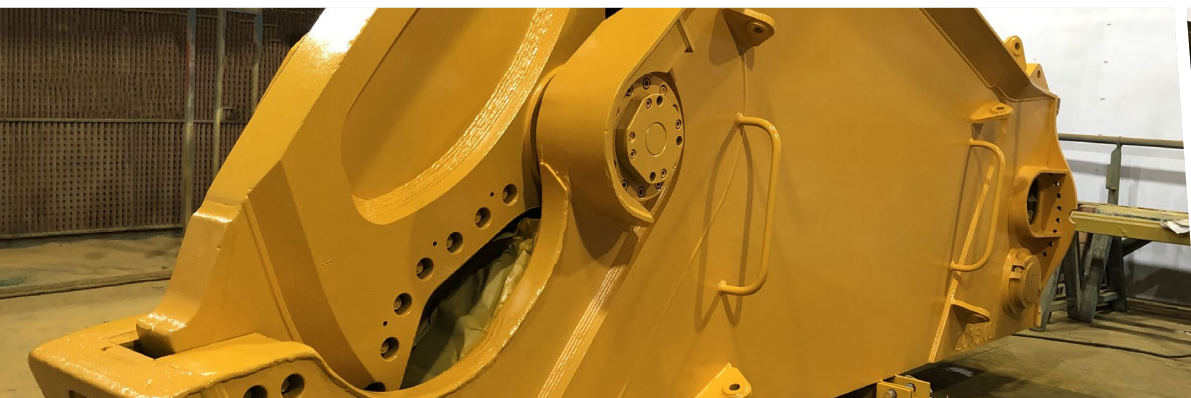




2835Te Hydraulic Shear



The 2835Te Hydraulic Shear is a versatile tool capable of performing fast and efficient scrapcuts on a variety of different grade materials of varying size and thickness.

The tool can be hung in either the horizontal or vertical positions from the certified lifting points allowing for access in the most challenging of situations.

The tool is supplied with a remote stand allowing the operator to be clear of the tool when the cutting operation commences.



2835Te Hydraulic Shear	
Shear force	2835Te
Jaw opening	1219mm (48")
Jaw depth	1270mm (50")
Flow/Pressure	80 - 1210 LPM @ 345 bar
Weights	15000kg (with base) 14500kg (without base)
Dimensions	6000 L x 1500 W x 1800 H (mm)
Dimensions (with base)	5300 L x 2100 W x 2450 H (mm)
Dimensions (without base)	5300 L x 1000 W x 2250 H (mm)

