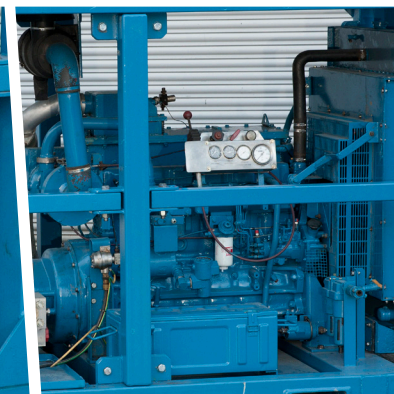




Jetting Pumps WP29

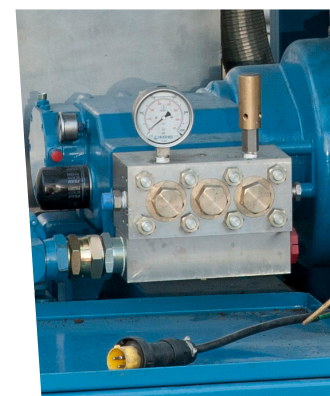
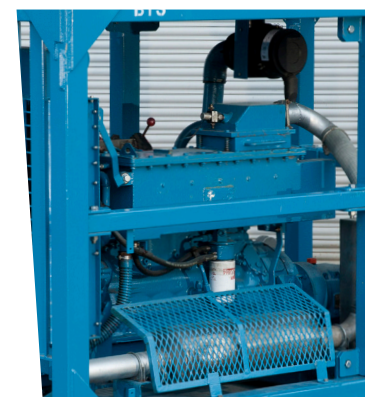


Power Drive Specification	
Engine Type	2003 Iveco 7675 Si
Fuel Type	Diesel
Hydraulic Horsepower	2200
Engine Horsepower	142
Transmission	Direct drive
Fuel Capacity	40 imp gal
Starting System	Air start

Pump	
Pump Type	Neolith NP160
Gear Ratio	4 : 1
Plunger Type	5 x 25 mm OR 5 x 50 mm
Duty	15 gpm @ 12000 psi OR 60 gpm @ 3050 psi
Max Pressure	Varies
Max Flow	Varies
Suction Connections	2" BSP
Discharge Connections	1/2" / 3/4" BSP OR 2" 1502
Suction Required	Positive suction

Dimensions	
Length	2724 mm
Width	1720 mm
Height	1760 mm
Weight	4000 kg

Certification	
	OCMA MEC I Zone II. BS7072



For more information on how Fisher Offshore can add value to your offshore operations visit www.fisheroffshore.com

or contact one of our specialist consultants at info@fisheroffshore.com or call +44 (0)1651 87 39 32

Fisher Offshore, North Meadows, Oldmeldrum, Aberdeenshire, Scotland AB51 0GQ

