



H & S AKC 100 Marine Crane



The AKC 100 comes complete with a dedicated HPU, transport base with incorporated sea fastening plates. Benefiting from dual control local and Canbus remote control allows the operation of the crane both from the dedicated operator's seat and also on deck ensuring best line of sight at all times.

The AKC 100 has incorporated manual sea state limiting mechanisms allowing the operator to pre-set the actual sea state limiting the swl of the crane and winch preventing overload damage when operating in adverse weather.

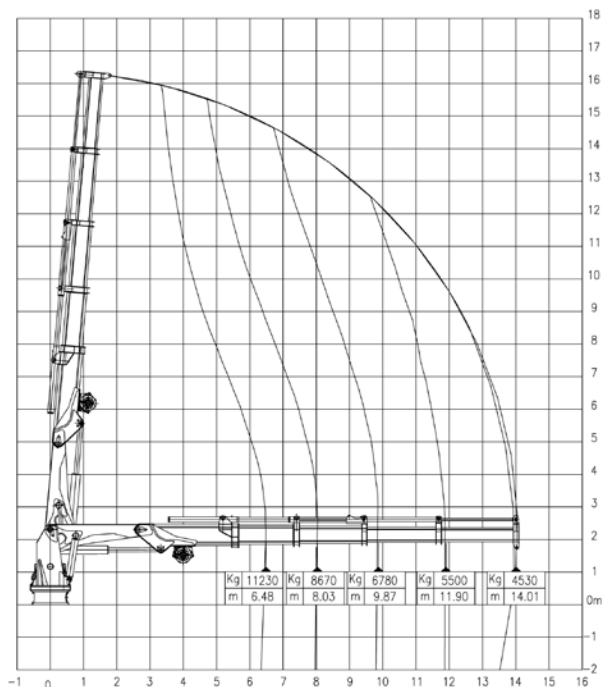


H and S AKC 100	
Max outreach	14m
Max Lifting Height	16m
Hook Lifting Capacity	4530kg @ 14m
Slewing Angle (Continuous)	360°
Recommended Pump Capacity	100 l/min
Max Working Pressure	280 bar
Crane Weight inc Skid	18,000kg
Control	Local and Remote
Power Requirements	75kW
Winch Lifting Capacity	5000kg @ 14m
Crane Base Dimensions	8900 L x 2400 W x 3400 H (mm)
Classification	BV
Year of Manufacture	2013
Year of Manufacture	2013



H & S AKC 100 Marine Crane

WORKING DIAGRAM with HOOK



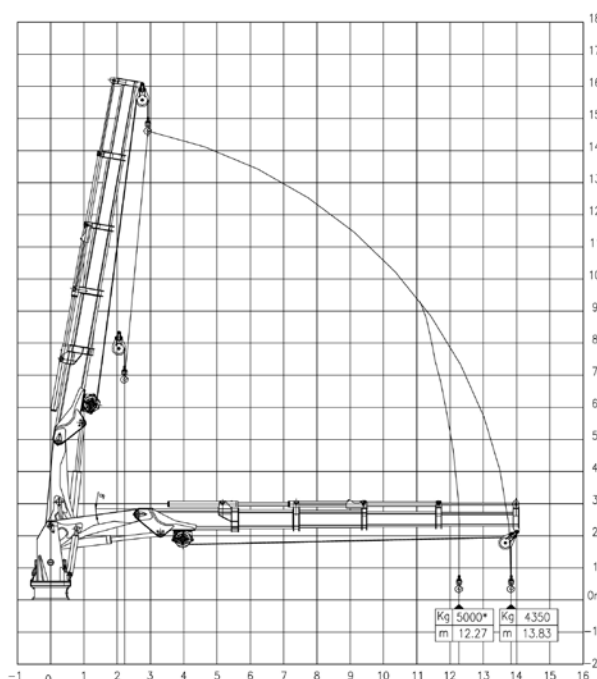
Marine Crane model AKC 100 HE4

Crane built in according to DIN 15018 Rules Class H1-B3
(Max Permitted Heel/trin Angles 6°/2°)

WORKING DIAGRAM with WINCH



*Max Pull on the Top Layer



Marine Crane model AKC 100 HE4

Crane built in according to DIN 15018 Rules Class H1-B3
(Max Permitted Heel/trin Angles 6°/2°)



For more information on how Fisher Offshore can add value to your offshore operations visit www.fisheroffshore.com

or contact one of our specialist consultants at info@fisheroffshore.com or call +44 (0)1651 87 39 32

Fisher Offshore, North Meadows, Oldmeldrum, Aberdeenshire, Scotland AB51 0GQ