



HLRM 50-9 Marine Crane



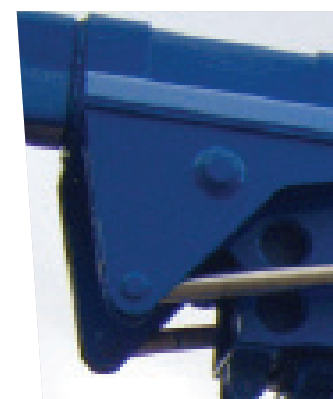
The HLRM 50-9 Marine Crane comes complete with skid assembly suitable for deck mounting and electric hydraulic power pack.

The fitted winch is capable of lifting 1.7te at max outreach in single fall. This Marine Crane is built to provide long time operation against harsh marine

environments. All piston rods are made from Nikrom 350 with stainless steel pipes and fittings as standard. All cranes provided for hire or sale by Fisher Offshore come with a full certification package including an operations and maintenance manual.



HLRM 50-9 Marine Crane	
Hook Lifting Capacity	1,700kg up to 16,500kg at min. radius
Winch Lifting Capacity	(2,200kg @ 9m) (1700kg @ 15.5m)
Max Outreach	15.5m
Slewing Angle (Continuous)	360°
Recommended Pump Capacity	70 l/min
Max Working Pressure	180 bar
Control	Mounted Operator Station
Crane Weight inc. base	8,500 kg



For more information on how Fisher Offshore can add value to your offshore operations visit www.fisheroffshore.com

or contact one of our specialist consultants at info@fisheroffshore.com or call +44 (0)1651 87 39 32

Fisher Offshore, North Meadows, Oldmeldrum, Aberdeenshire, Scotland AB51 0GQ



HLRM 50-9 Marine Crane

WORKING DIAGRAM

(ONLY FOR USE WITH HOOK - SEA STATE - 0 - OR HARBOUR CONDITION)

