

Product Features and Specifications

FA2i-MR Infinity Series Winch - Capacity: 3,180 lbs (1 445 kg)

PFS-FA2i-MR-09072010

Ingersoll Rand's offering of dedicated and dual purpose (utility & personnel lifting) Man Rider™ winches are known worldwide as the standard for meeting the toughest personnel lifting requirements in the industry.

These rugged, oilfield tough winches have Type Approval or Independent Review certificates issued by the classification societies of ABS or DNV. Meet NPD, NMD and UK HSE regulations for personnel lifting operations.



Features

Lifting and Lowering People on Offshore Drilling Rigs and Platforms

Whether it is a dedicated Man Rider™ for lifting people in harnesses or boatswain's chairs, or lifting people and then lifting material, Ingersoll Rand has a winch for the application.

Meeting world standards. Certified to those standards.

Drilling rigs and platforms are used all over the world and come under numerous and diverse regulations. Ingersoll Rand builds to regional and global specifications and our winches are certified by Det Norske Veritas, DNV, and the American Bureau of Shipping, ABS.

Type Approval

A comprehensive design review by a third party addresses intended service, applications, ratings, design calculations, load bearing components, product specifications, and service restrictions or limitations. Plant surveys verify quality control procedures. A **Type Approval** certificate is then issued.

FA2i-MR with optional Air Preparation Package

What makes a winch a Man Rider™

Minimum design factors of 8:1. Dual Brakes. Drum Guards. Type Approval Certs and Data Books upon request (when requested at time of order). And, depending on where in the world it will be used, - CE certifications, overload devices, slack wire detectors, limit switches, emergency shut-offs, emergency lowering devices and spooling devices.



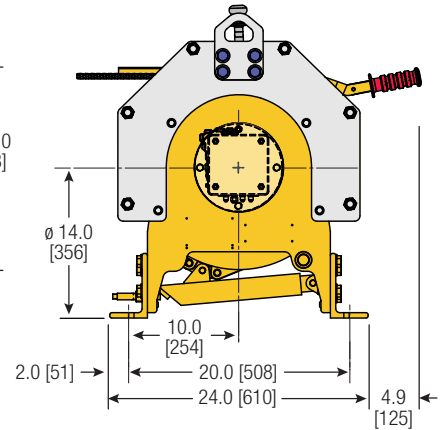
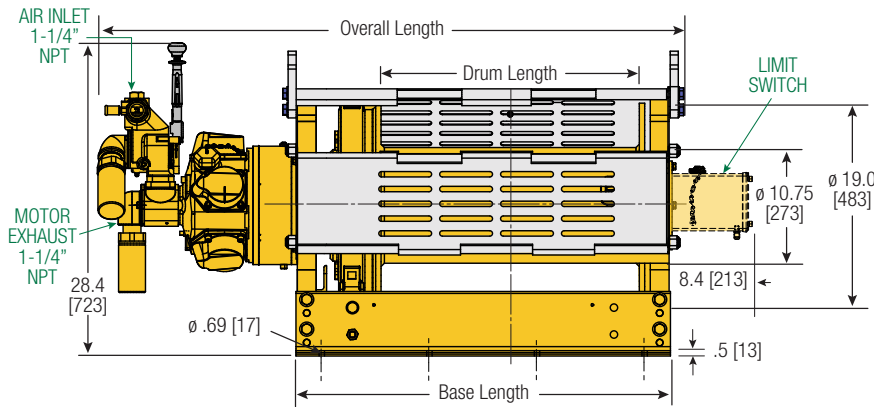
Quality Engineering...
Safely Today



Product Features and Specifications

FA2i-MR Infinity Series Winch - Capacity: 3,180 lbs (1 445 kg)

PFS-FA2i-MR-09072010



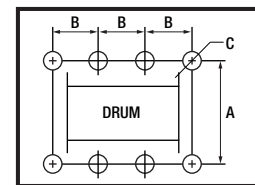
FA2i-MR12MK1G
FA2i-MR24MK1G
with disc and manual brake

Dimensions shown are inches.
Dimensions in Brackets [] are mm.
Dimensions are subject to change.
Contact factory for certified drawings.

Dimensions: FA2i-MR and Bolt Down Pattern

	Drum Length 12" [305 mm]		Drum Length 24" [610 mm]	
	in	mm	in	mm
Overall Length	40.8	1036	52.8	1341
Base Length	22.8	579	34.8	884
'A'	20.0	508	20.0	508
'B'	9.0	229	10.0	254
'C'	0.69	18	0.69	18
Total # Holes	6		8	

Bolt Down Pattern



'C' = Bolt Hole Inside Diameter

Man Rider™ Lift Ratings at 8:1 Design Factor (Performance at 6.3 Bar - 90 PSI at air inlet when winch is operating)																
Model #	hp	Top Layer				First Layer				Average Air Consumption ⁽¹⁾	Sound Level ⁽²⁾	Inlet Size	Exhaust Size	Net Weight		
		Rated Capacity	Speed	Rated Capacity	Stall Pull	ft ³ /min	m ³ /min	lbs	kg					lbs	kg	
FA2i-MR24MK1	9	3,180	1445	75	23	68	21	9,139	4154	280	8	87	1-1/4"	1-1/4"	925	420

Utility Lift Ratings at 5:1 Design Factor (Performance at 6.3 Bar - 90 PSI at air inlet when winch is operating)																
FA2i-MR24MK1	8	4,400	2000	51	16	55	17	9,139	4154	280	8	87	1-1/4"	1-1/4"	850	386

(1) Average Air Consumption is at rated load and speed at top layer (2) With optional muffler

Drum Wire Rope Storage Capacity - Imperial - Man Rider™																		
Series	Rated capacity lbs	Rope Diameter in	Min Req Break Strength* lbs	Accumulated rope capacity in feet / number of layers														
				1	2	3	4	5	6	7	8	9	10	11	12	13	14	
FA2i-MR12	3,180	1/2	25,440	66	141	220	305	396	492	594	702							
FA2i-MR24	3,180	1/2	25,440	138	289	450	624	809	1,006	1,214	1,435							

Drum Wire Rope Storage Capacity - Metric - Man Rider™																		
Series	Rated capacity kg	Rope Diameter mm	Min Req Break Strength* kg	Accumulated rope capacity in meters / number of layers														
				1	2	3	4	5	6	7	8	9	10	11	12	13	14	
FA2i-MR12	1445	13	11539	20	42	66	91	119	147	178	210							
FA2i-MR24	1445	13	11539	41	86	135	187	242	301	364	430							

* Note: The Minimum Required Breaking Strength for the wire rope needs to be the Rated Capacity multiplied by the Design Factor.
Example: for the FA2i-MR12 (with a 8:1 Design Factor) 3,180 x 8 = 25,440 lbs.



Quality Engineering...
Safely Today

Fisher Offshore

North Meadows, Oldmeldrum, Aberdeenshire, Scotland AB51 0GQ

Tel: +44 (0) 1651 873932

Fax: +44 (0) 1651 873939

ingersollrand@fisheroffshore.com

fisheroffshore.com

A James Fisher and Sons PLC Company