



I.R.E.P. S.A.S
59450 Sin le Noble - France
Tel : +33 (0) 27 93 08 06
Fax : +33 (0) 27 93 08 00

Copyright © 2007 Ingersoll-Rand Company
All Rights Reserved

LIFTCHAIN LC2A Series LOW HEADROOM AIR CHAIN HOIST

Model LC2A120DIP3LVE(N)...-E

12ton lifting capacity

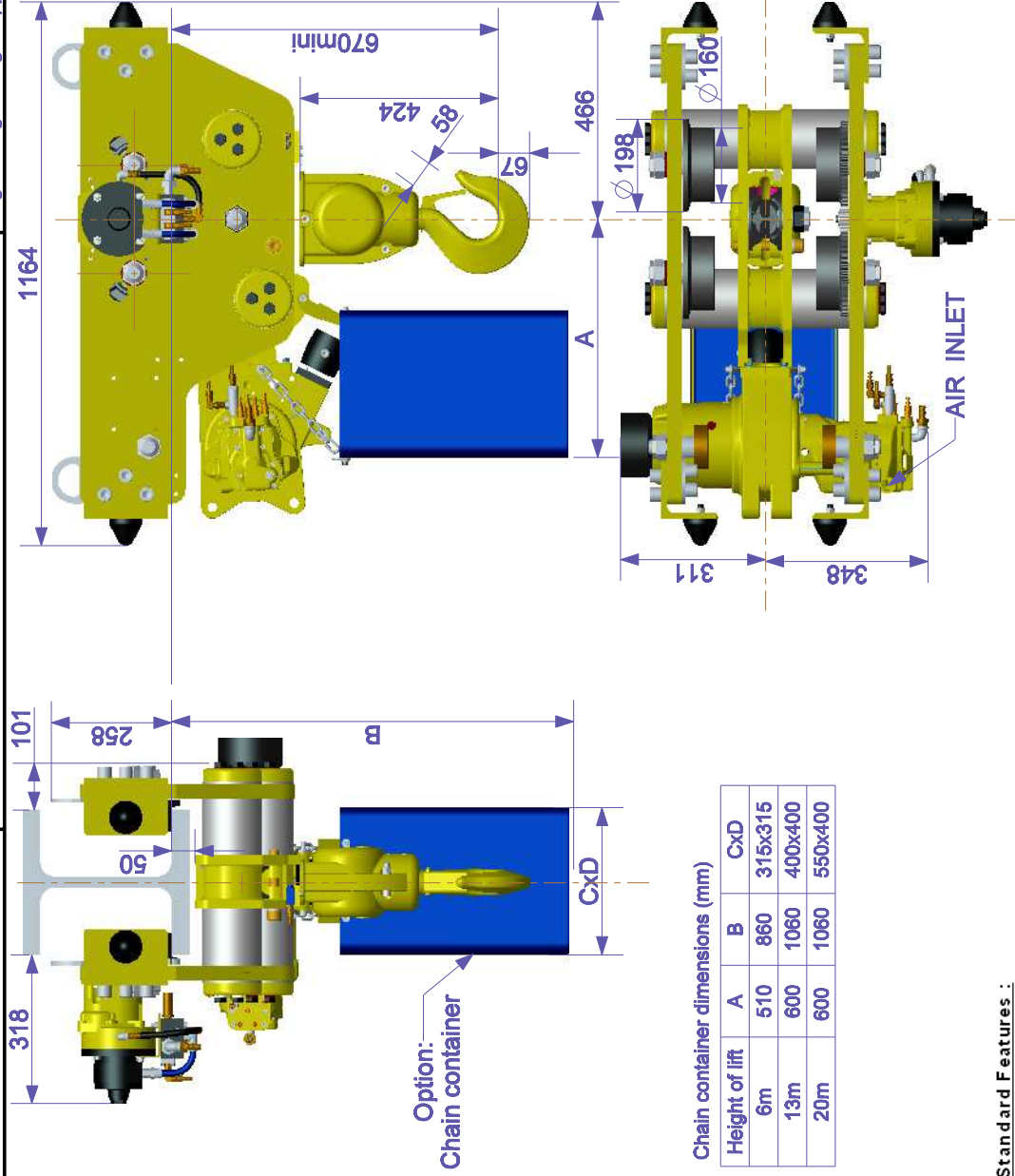
IREP Drawing Number

09-10-13 - L645

Customer Drawing Number

Folio: 1 / 1

Engineering Manager Approval: JLF



Chain container dimensions (mm)

Height of lift	A	B	CxD
6m	510	860	315x315
13m	600	1060	400x400
20m	600	1060	550x400

Standard Features :

- Rugged and Compact modular design
- Design temperature -20°C
- Explosion proof - 100% duty rating - No downtime
- Gear type air motor on hoist and multi-vane air motor on trolley
- Overload protection device adjusted at factory during load tests
- Main air emergency stop at pendant (as per EN 418)
- Variable speed control at pilot pendant (4 buttons)
- Top and bottom limit switches integrated in hoist body for better protection
- Automatic fail safe disc brake on hoist and trolley (no adjustment required)
- Corrosion resistant load chain
- Individually load tested before shipment
- It is strongly recommended to use a lubricating and a filtration system on the compressed air line.
- The compressed air temperature must not exceed 65°C at the motor air inlet.
- For higher temperature, please consult us.

Options:

- Gear type air motor on trolley (instead of vane motor)
- Spark resistant package for ATEX zone 1
- Chain containers
- Marine or offshore paint including sandblasting
- Rack and pinion drive

Exclusions (ATEX)

- Standard version is suitable for Zone 2 (ATEX Marking Ex II 3 GD c IIB 135°C x)
- Optional spark resistant package is suitable for Zone 1 (ATEX marking Ex II 2 GDc IIB135°Cx)

FEM classification

- Driving mechanism classification 1Bm

Built in ISO 9001 certified factory

Technical data at 6.3 bar

Model	LC2A 120 D
Rated Capacity (metric Ton)	12
Falls of chain	2
Lifting speed at rated load (m/min)	1,1
Lifting speed at no load (m/min)	1,8
Lowering speed at rated load (m/min)	1,3
Travelling speed at rated load (m/min)	12
Travelling speed at no load (m/min)	15
Working pressure range (Bar)	4 to 7
Hoist air consumption at rated load (m³/min)	5
Trolley air consumption at rated load (m³/min)	1,9
Mini-Maxi trolley flange adjustment (mm)	1 70-3 10
Max. bottom flange beam thickness (mm)	40
Minimum curve radius (m)	10
Air inlet (BSP)	3/4"
Chain size (mm)	16x45
Chain Weight per meter of lift (kg)	11,4
*Weight with std lift (Kg)	540

*Net weight is given with standard lift of 3m and standard control length of 2m

The equipment described on this sheet is subject to the general sales and warranty conditions of Ingersoll Rand Company. Because of the constant evolution of technology, Ingersoll Rand Company reserves the right to modify without notice the specifications contained in this document.