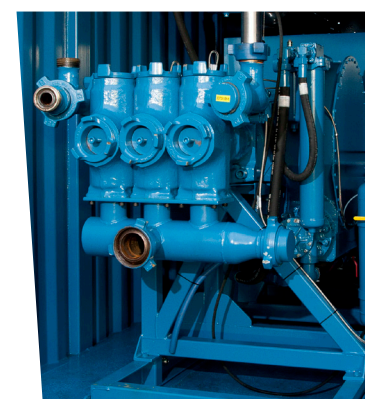




HT400 Water Pump WP15



| Power Drive Specification | |
|---------------------------|---|
| Engine Type | Detroit Diesel 12V 71 |
| Fuel Type | Diesel |
| Hydraulic Horsepower | 345 |
| Engine Horsepower | 450 |
| Transmission | Allison 5 speed CLT 754 HD |
| Ratios | 5.18, 3.19, 2.02, 1.38, 1.00 |
| Fuel Capacity | 70 Gallons |
| Starting System | Air Start |
| Pump | |
| Pump Type | Triplex Halliburton HT400 |
| Gear Ratio | 8 . 4 : 1 |
| Plunger Type | 4½" Plungers |
| Max Pressure | 10000 psi |
| Max Flow | 10 BPM |
| Discharge Connections | 2 x 3" fig 1502 & 2 x 2" 1502 |
| Suction Connections | 4" fig 206 |
| Control Panel | Externally mounted c/w shutdown system. Rexroth 5 speed air operated transmission control with quick neutral button |
| Dimensions | |
| Length | 6100 mm |
| Width | 2430 mm |
| Height | 2860 mm |
| Weight | 13500 kg |
| Certification | |
| | OCMA MEC I Zone II. Housed in a 20' shipping container certified to BS EN 12079 |



For more information on how Fisher Offshore can add value to your offshore operations visit www.fisheroffshore.com or contact one of our specialist consultants at info@fisheroffshore.com or call +44 (0)1651 87 39 32
Fisher Offshore, North Meadows, Oldmeldrum, Aberdeenshire, Scotland AB51 0GQ

